

## HEBRON

This Northern Pacific Railroad town site was founded in 1885 in Section 33-140-90, Custer Township and named by either Rev. J. G. Koch or Rev. John L. Kling for Hebron, Palestine, whose locale is said to be similar. Hebron means enclosure. The post office was established October 22, 1885 when Postmaster Charles Krauth moved his Knife River post office to Hebron from its original location one mile to the west.

Ferdinand Leutz (1854-1934) is generally considered to be the town's founder, with the first influx of settlers coming here from Johannestal, Crimea, South Russia. The city, which incorporated in 1916 with Peter S. Jungers mayor, reached a peak population of 1,412 in 1950. HEBRON is called "The Brick City," noting the famous Hebron Brick Company which was established here in 1904.

Source: North Dakota Place Names Page 88



**NDSU Institute for Regional Studies**

View looking down dirt street in Hebron, N.D. Wood frame commercial buildings visible on both sides of the street. Columbia Hotel and cafe visible at right with front porch and jerkinhead roof.

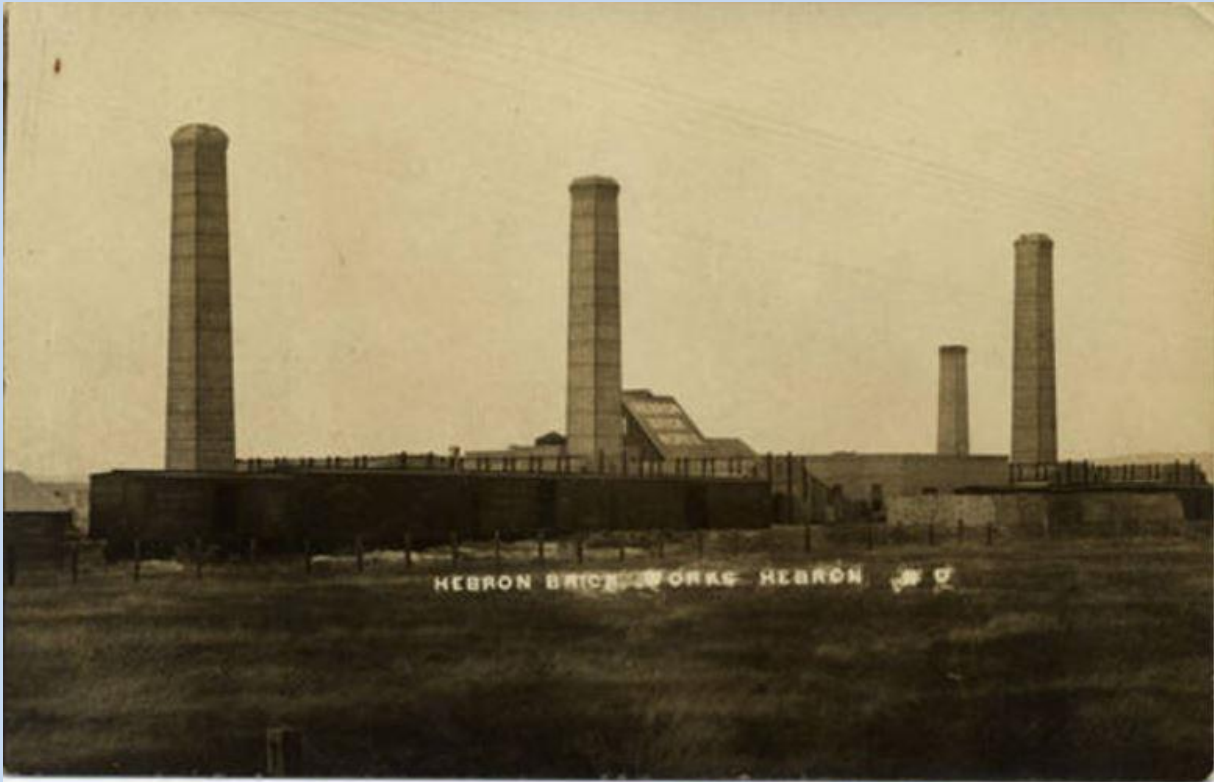
Photo credit: Institute for Regional Studies, NDSU, Fargo (2000.243.2)



This early photo of Hebron was published in the book "Hebron's Heritage," a publication celebrating the city's 75th anniversary celebration held in June of 1960.



Hebron's first public school was built in the late 1880s. This photo was published in the book "Hebron's Heritage," a publication celebrating the city's 75th anniversary celebration held in June of 1960.



## NDSU Institute for Regional Studies

View of brick factory showing four smoke stacks, and a line of railroad freight cars. Circa 1910.  
Photo credit: Institute for Regional Studies, NDSU, Fargo (2000.243.5)



This aerial photo of the Hebron Brick Company was taken in 1958 for the book "Hebron's Heritage," a publication celebrating the city's 75th anniversary celebration held in June of 1960.