



Campsite No. 2, Sweet Briar Creek photo taken May, 2015

The information about the individual campsites located between Mandan and Dickinson was drawn from the book "Following the Custer Trail" by Laudie Chorne, as are the map illustrations. Chorne notes that the trail depicted in the maps is approximate, and intended for the reader to gain an understanding of the terrain through which the soldiers traveled. Many of the landmarks seen by the troops traveling the Custer Trail are visible from Old Highway 10 and Interstate 94.

The Map Locations of the campsites were documented by Mr. Frank Anders between 1930 and 1950. Mr. John Carroll compiled Anders' work into a book entitled "The Custer Trail of 1876." The longitude and latitude coordinates are derived from the Map Location descriptions. Keep in mind that each camp was approximately one-half mile square to accommodate the large number of troops and animals that traversed the trail in the spring of 1876.

Most of the campsites are on private property. Anyone wishing to visit them must obtain appropriate permission from the landowners.

Campsite No. 2: Sweet Briar Creek

May 18, 1876

Map Location:

Morton County

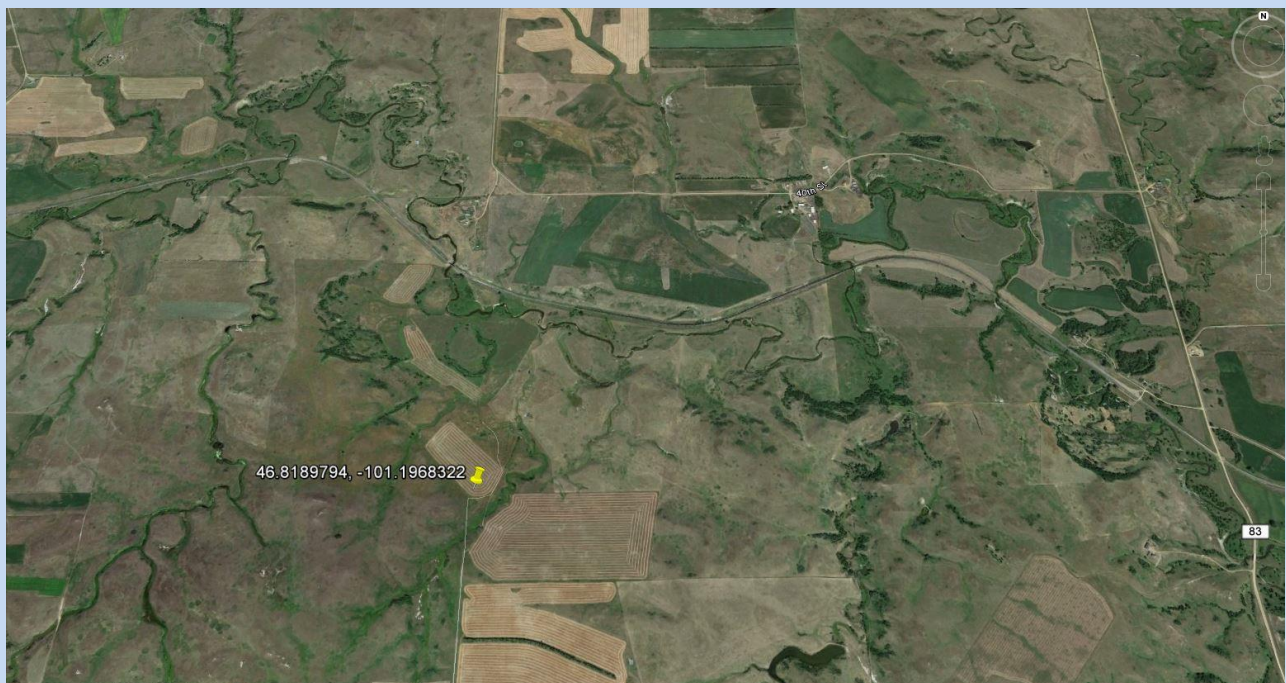
T139 R83W

SW of Sec. 29 and SE of Sec. 30

Approximately 3 miles south of 1-94 Exit No. 140

Take exit 140 off I-94 south, follow a gravel road two miles south, two miles west. From this location it will be necessary to hike approximately ½ mile south. The campsite is located a short distance south of railroad track spanning sections 29 and 30 lines. (Laudie Chorne, "Following the Custer Trail," p24)

The troops were roused at 2:40 a.m. and broke camp at 5:00. Before they could head west, however, they had to build a road to get the wagon train across the river. They departed camp at 8:00 a.m. By 1:45, after traveling nearly 11 miles, they reached Campsite No. 3 on a plateau about 50 feet above Sweet Briar Creek. At about 3 p.m., a violent storm broke out bringing cold, heavy rain and abundant lightning. The storm did not last long, but dropped enough rain to soak the troops and make the ground muddy.



Aerial View of Campsite No. 2

