

The following are excerpts from the 'Almont Golden Jubilee' history book published in 1956 by the Almont 50th Anniversary Historical committee.

ALMONT SURVEYED

July 4, 1906

A wave of excitement started in the homes around Almont today and went for many miles in all directions, especially south. H. H. Harmon, the county surveyor, E. W. Hyde and O. A. Young, brother-in-law of D. C. Wilkins, who owned the land, spent the day surveying the site for a new town to be located on the Almont siding.

The town was laid out according to the railroad, near the tip of the big V with lines running diagonal to section lines. It took all day to lay out the nine blocks of the original town site. One block they designated as court house square. Hyde and Young carried the chain for the surveyor. All enthusiastically welcomed the visit of Richert Olson, who came to see what was going on in the old pasture. With well-known Scandinavian hospitality he soon returned bringing a bountiful dinner to the hot and tired men, who had a picnic on the grass.

There had been a siding named ALMONT since the Northern Pacific railway came through in 1883. The name was suggested by the buttes in the vicinity, the word being coined from Spanish word "alta", high and French word "mount", hill. Beside the siding was a telephone booth.

Today the new town was surveyed and many families are excited at the prospect of a town 5 1/2 miles closer than Sims.

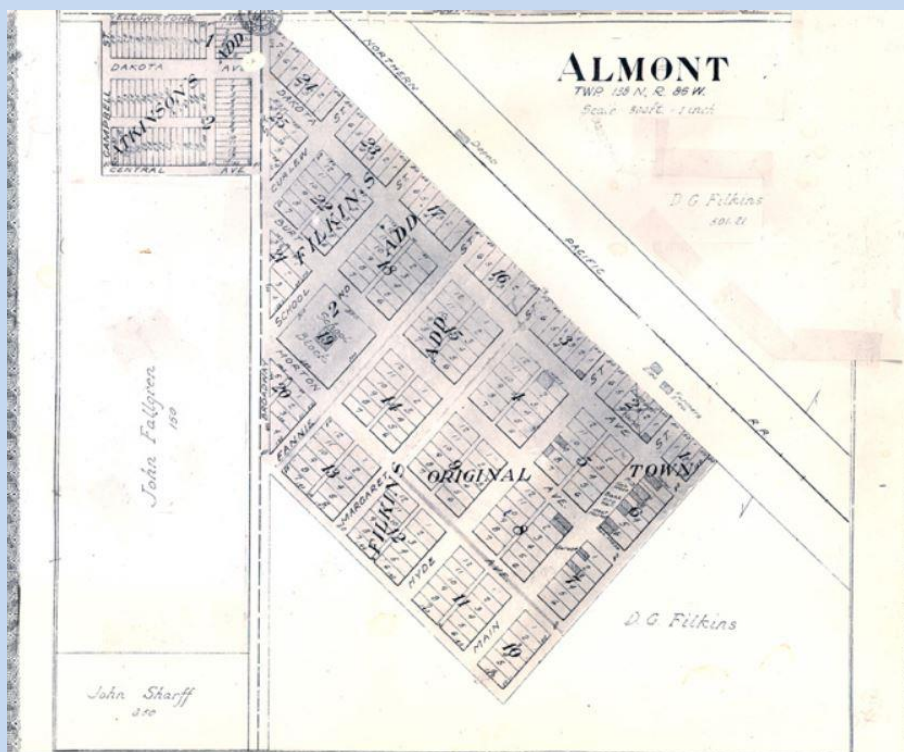
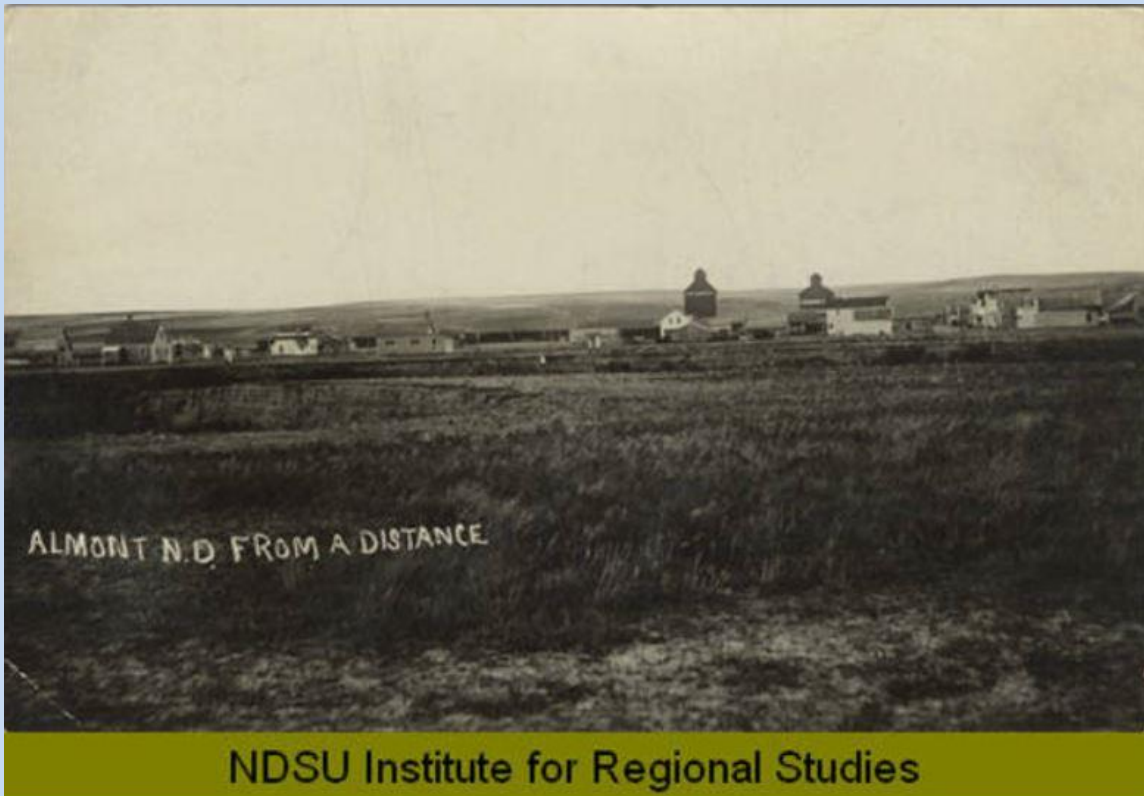


Photo courtesy of the Unofficial Website for the Almont, North Dakota Centennial, 1906-2006



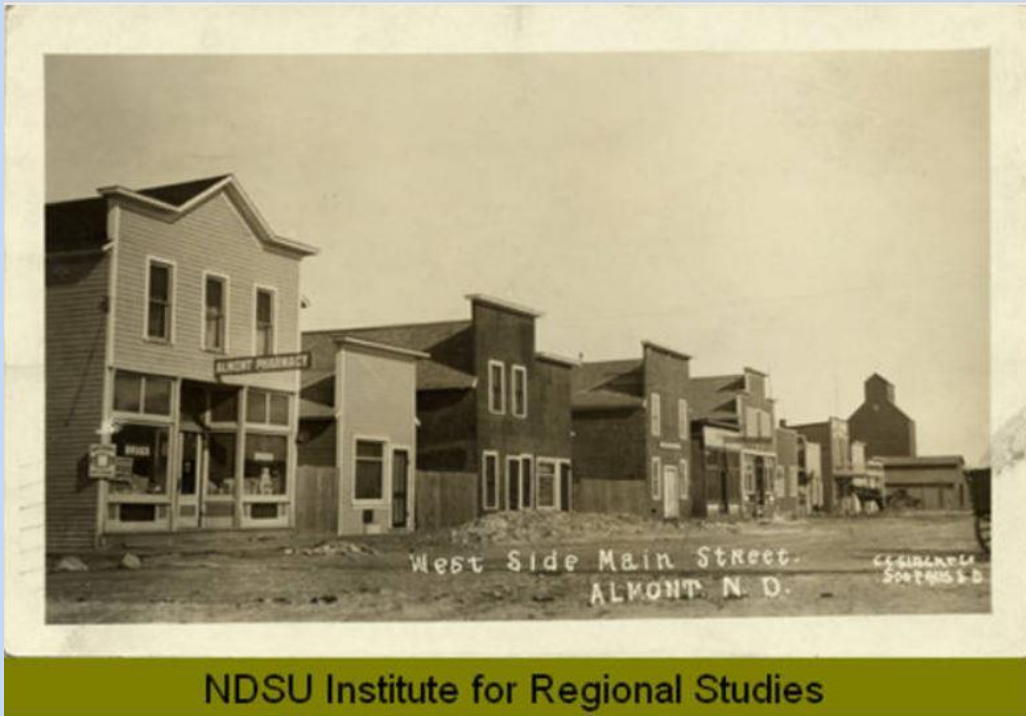
The Almont train depot. Circa 1907.

Photo courtesy of the Unofficial Website for the Almont, North Dakota Centennial, 1906-2006



This real photo postcard shows the town of Almont in the distance with two elevators, businesses, railroad cars and houses visible. Beyond town the land rises. Circa 1907-1909.

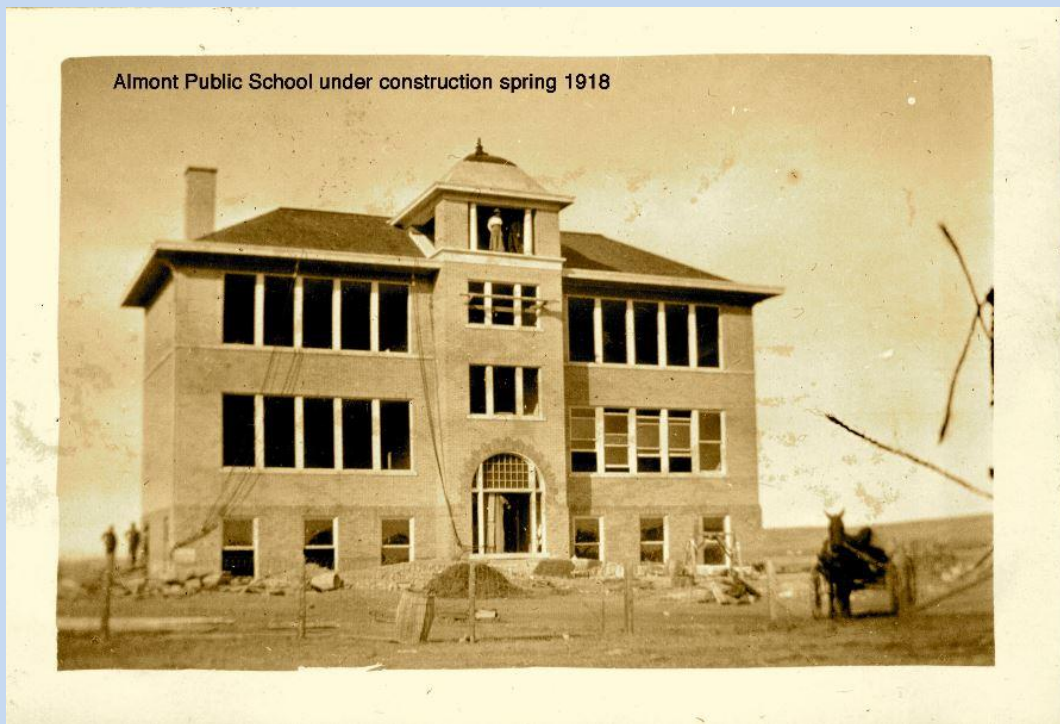
Photo courtesy of the NDSU Institute for Regional Studies (NDSU)



NDSU Institute for Regional Studies

This real photo postcard shows businesses along one side of the street and a grain elevator in the distance. Circa 1910-1919.

Photo courtesy of the NDSU Institute for Regional Studies (NDSU)



The Almont High School was built in 1918 and graduated its first class in 1920. The school attracted students from surrounding one-room schools that offered classes through the eighth grade. The high school closed in the 1980s.

Photo courtesy of the Unofficial Website for the Almont, North Dakota Centennial, 1906-2006



Picnic at Lovers Cliff – Almont 1924

Photo courtesy of the Unofficial Website for the Almont, North Dakota Centennial, 1906-2006



Main Street of Almont, about 1950.

Photo courtesy of the Unofficial Website for the Almont, North Dakota Centennial, 1906-2006



Almont From School ~1950

Panoramic view of Almont taken from the school.

Photo courtesy of the Unofficial Website for the Almont, North Dakota Centennial, 1906-2006